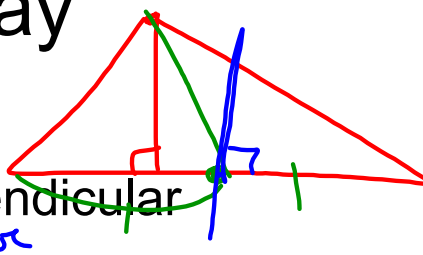


# Test Monday

## 5.2-5.5

5.1 Altitude, Median, Perpendicular bisector



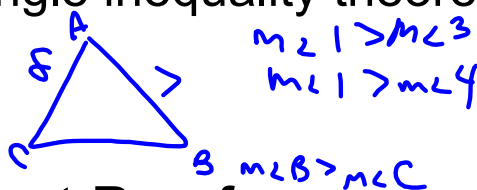
5.2 Inequalities



Exterior angle inequality theorem

Thm 5.9

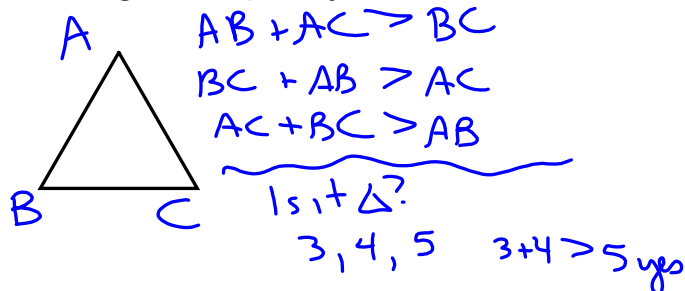
Thm 5.10



5.3 Indirect Proof

3 part process

5.4 The triangle inequality theorem

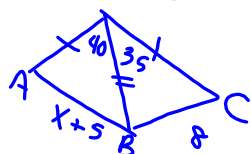


5.5 Inequalities in 2 triangles

SAS Inequality Thm.

SSS Inequality Thm.

2 sides are 10 + 15  
 $5 < x < 25$



$AB \geq BC$

$$x + 5 > 8$$

$$x > 3$$

Restrictions  
 $x + 5 > 0$   
 $x > -5$